

Air Nippers and Pneumatic Cutting Tool

Application

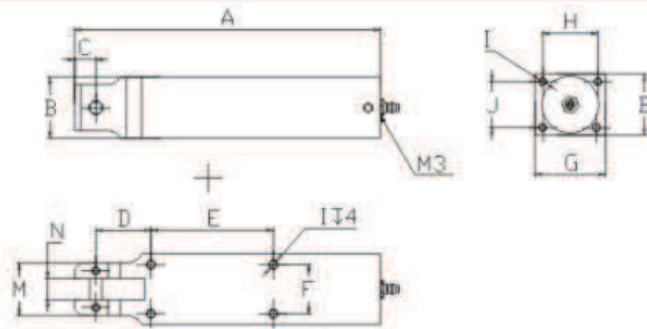
The air nipper is used specifically for fully automatic winding machines, and is used to carry out automatic wire cutting when the coil winding process is finished.

Not only is it used for cutting of enameled copper wire, but it is also used to cut transformer pins and plastics. The applicable working air pressure ranges between 0.4MPa to 1.2 MPa.

The air nipper consists of the blade and the body. The blade carries out the cutting, while the body offers power for cutting. Once the specifications are appropriate, a single air nipper body can be outfitted with different blades.

Model of Cylinder	Replace Blades	Cutting ability (Φmm)		
		Cooper wire	Iron wire	Soft wire
CS10,C20,C40, TS-5	WIS-A,B,D,F,G;WLS/WCS	0.02-1.0	0.02-0.50	0.02-2.0
C30	WIS-A,B,D,F,G;WLS/WCS	0.02-1.0	0.02-0.50	0.02-2.0
C25	WIS-E	0.02-1.0	0.02-0.5	0.02-2.0
C50	WIS-E2	0.02-1.0	0.02-0.5	0.02-2.0
CS-5	--	0.02-0.5	--	--
C45	WIB (A,B,C)	0.10-2.5	0.1-1.5	0.1-3.0

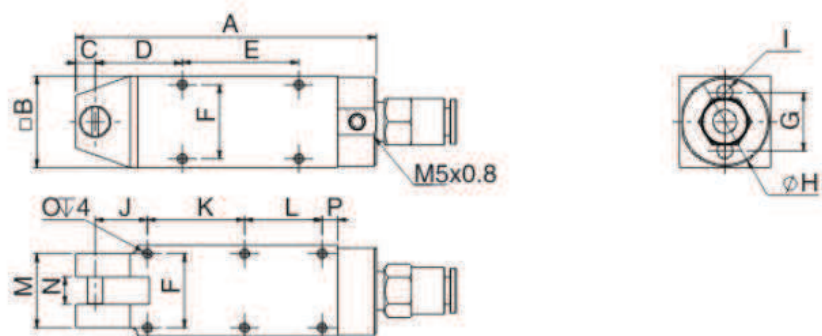
CS10



Model No.	Size(mm)																Weight (g)	Material
	A	B	C	D	E	F	G	H	I	J	K	L	M	N	O	P		
CS10	100	20	7	18	40	16	23	18	M3	15	-	-	17	7	-	-	80	Aluminium alloy



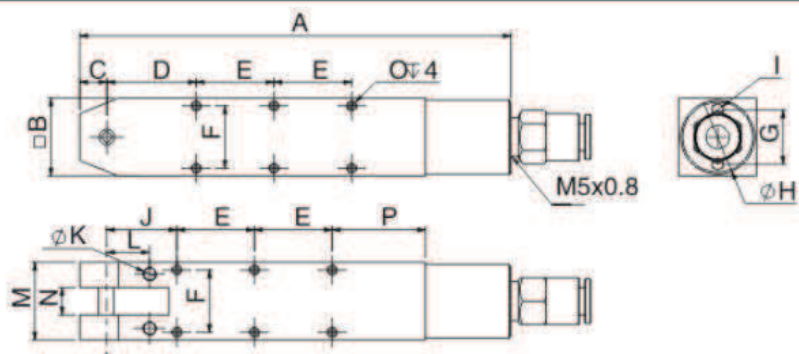
C20 C45



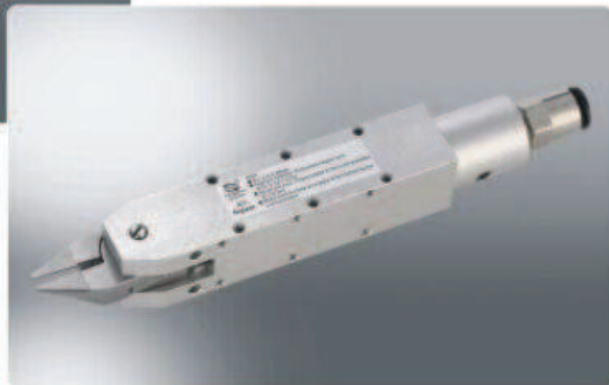
Model No.	Size(mm)																Weight (g)	Material
	A	B	C	D	E	F	G	H	I	J	K	L	M	N	O	P		
C20	77.5	23.5	5	22.5	30	19	15	23	Φ4	13.5	25	20	19	7	M3	4	76	Aluminium alloy
C45	129	45	9	41	40	36	30	44	M5	36	40	-	26	12	M4	24	412	Aluminium alloy



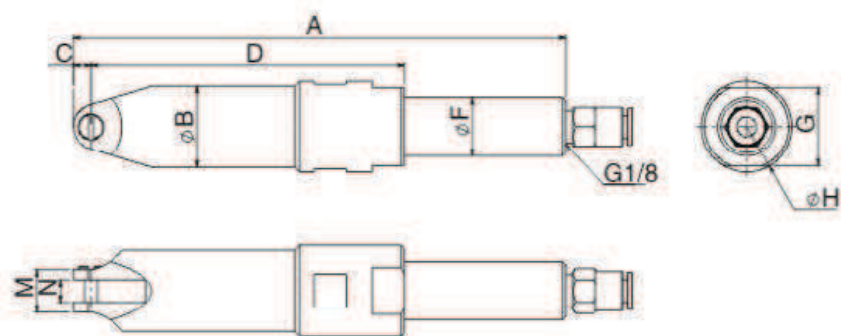
C25



Model No.	Size(mm)																Weight (g)	Material
	A	B	C	D	E	F	G	H	I	J	K	L	M	N	O	P		
C25	99	20	7	23	20	16	14	19.5	M3	18	3	11	20	7	M3	24	70	Aluminium alloy



C30



Model No.	Size(mm)																Weight (g)	Material
	A	B	C	D	E	F	G	H	I	J	K	L	M	N	O	P		
C30	153	25	5.5	97	-	18	24	28	-	-	-	-	13.1	7	-	-	98	Aluminium alloy



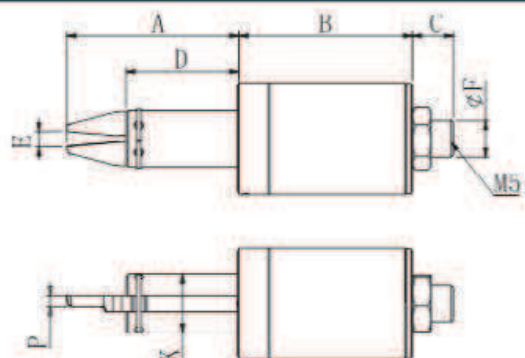
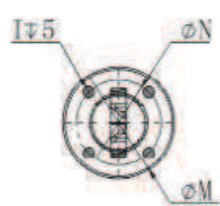
C40

C50

Model No.	Size(mm)															Weight (g)	Material
	A	B	C	D	E	F	G	H	I	J	K	L	M	N	O		
C40	105	24	7	89	-	-	18	-	M3	-	-	-	14,5	7	-	76	Aluminium alloy
C50	99	20	7	82	-	-	14	-	M3	-	-	-	14	7	-	48	Aluminium alloy



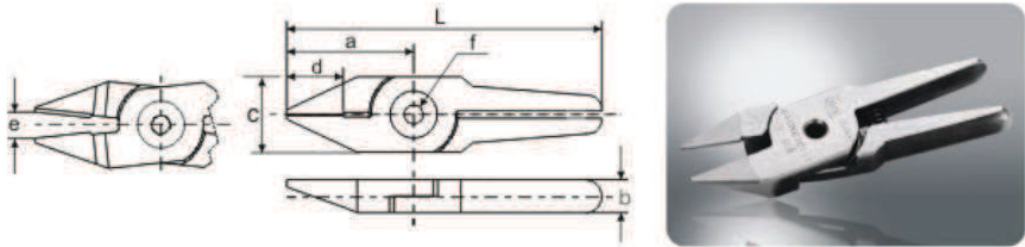
CS-5

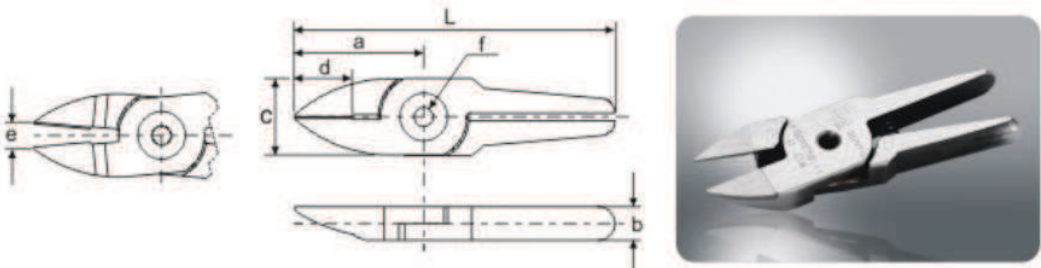


Model No.	Size(mm)																Weight (g)	Material
	A	B	C	D	E	F	G	H	I	J	K	L	M	N	O	P		
CS-5	38.5	39	9	25	3	8	-	-	M4	-	-	-	25	19	-	2.4	144	Hard alloy steel



Replacement Blades

WIS									
<div>  </div>									
Model No.	Size(mm)							Weight (g)	Material
WIS-A	27	7	16	12	4.2	4	67	32	Tungsten steel blade
WIS-A2	31	7	16	16	4.8	4	71	38	Tungsten steel blade
WIS-E2	23	7	12	12	-	4	57	30	Tungsten steel blade

WIS									
<div>  </div>									
Model No.	Size(mm)							Weight (g)	Material
WIS-B	27	7	16	12	4.2	4	67	32	Tungsten steel blade
WIS-B2	31	7	16	16	4.8	4	71	38	Tungsten steel blade